



Color: WHITE / BLACK



○ **WHITE**



● **BLACK**

F-1 TELAIO

F-2 LUCI E CABLAGGI

F-3 BATTERIA

F-4 COMANDI AL MANUBRIO CON CAVI

F-5 SOSPENSIONI

F-6 CONTACHILOMETRI

F-7 RUOTA ANTERIORE

F-8 CARTER CATENA

F-9 RUOTA POSTERIORE

F-10 FRENI ANTERIORE E POSTERIORE

F-11 SERBATOIO

F-12 SEDILE

F-13 CAMBIO

F-14 COMANDO FRENO POSTERIORE

F-15 FILTRO ARIA

F-16 MARMITTE

F-17 PARAFANGO POSTERIORE

F-18 FIANCHETTI LATERALI

F-19 TANICA LIQUIDO RAFFREDDAMENTO

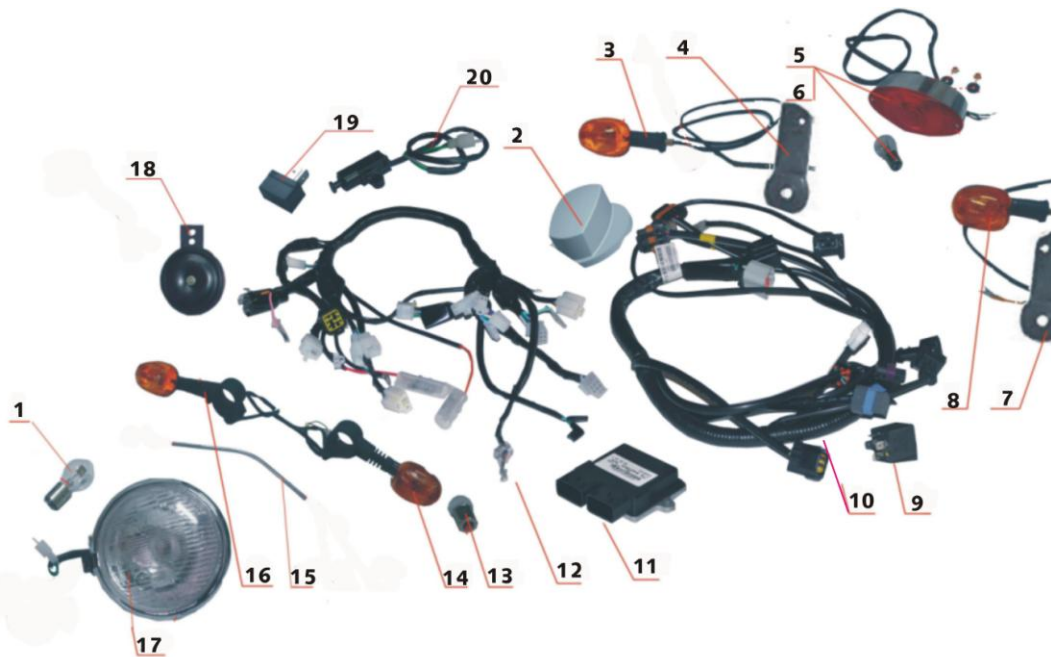
F-20 PEDALI

F-1 TELAIO



s/n	part number	part code	parts english name	qty
1	1.53.02.0110000	DD350E-6C-0201-100	Chasis(Delpi EFI)	1
2	1.53.14.0701000	DD300E-6C-1407-010	board for left peg	1
3	1.53.14.0601000	DD300E-6C-1406-010	board for right peg	1
4	1.63.14.0100000	DD300E-6-1401-000	Side stand w/flameout	1
5	1.01.14.0000300	DD250E-1400-003	Side stand spring	1
6	1.51.14.0000200	DD250E(3)-1400-002	Bolt for stand	1
7	1.57.02.0400000	DD250E-6-0204-000	mounting plate for E parts	1
8	1.01.02.0500300	DD250E-0205-003	damper cover	2

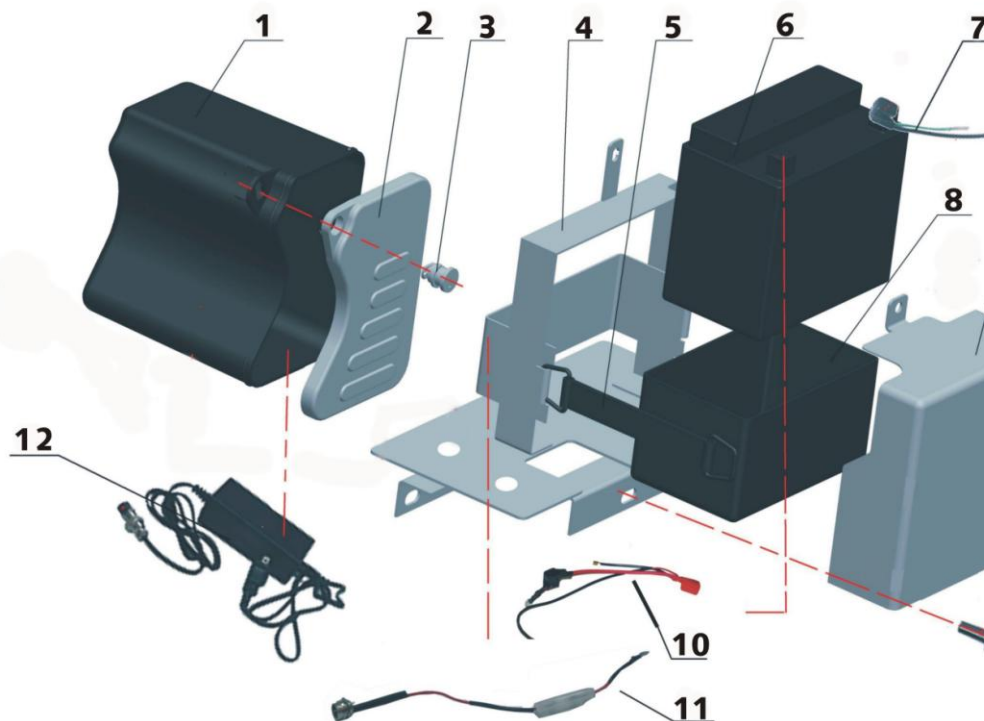
F-2 FARI E CONNESSIONI



s/n	part number	part code	parts english name	qty
1	1.57.03.0100300	DD250E-6-0301-003	Headlight bulb 12v35w	1
2	1.57.15.0100000	DD250E-6-1501-000	Ignition switch	1
3	1.57.03.0500000	DD250E-6-0305-000	Turn signal R. RR	1
4	1.53.03.0520000	DD300E-6C-0305-200	rear R turn light bracket	1
5	1.45.03.0600020	DD50E (3B) -0306-000	Tail light cable	1
6	1.01.03.0900300	DD250E-0309-003	Tail light bulb	1
7	1.53.03.0410000	DD300E-6C-0304-100	rear L turn light bracket	1
8	1.57.03.0400000	DD250E-6-0304-000	Turn signal L. RR	1
9	1.56.32.0901100	DD250E-9B-3209-011	relay (delpi EFI)	1
10	1.A7.32.0200000	DD350E-6-3202-000	vice cable(DEL EFI)	1
11	1.A7.32.0300000	DD350E-6-3203-000	ECU(DEL)	1

12	1.A7.32.0100000	DD350E-6-3201-000	main cable (DEL EFI)	1
13	1.45.03.0400100	DD50E (3B) -0304-001	Turn signal bulb 12V10W(E)	4
14	1.53.03.0200000	DD300E-6C-0302-000	right front turn left set	1
15	1.53.03.0400100	DD300E-6C-0304-001	front turn light mount	1
16	1.53.03.0300000	DD300E-6C-0303-000	right front turn light set	1
17	1.53.03.0100000	DD300E-6C-0301-000	front lamp	1
18	1.45.04.1200000	DD50E (3B) -0412-000	horn(E)	1
19	2.30.0111.70010	DD150E-4-0111700	Diode	1
20	1.65.04.0700000	DD125E-5-0407-000	flame switch	1

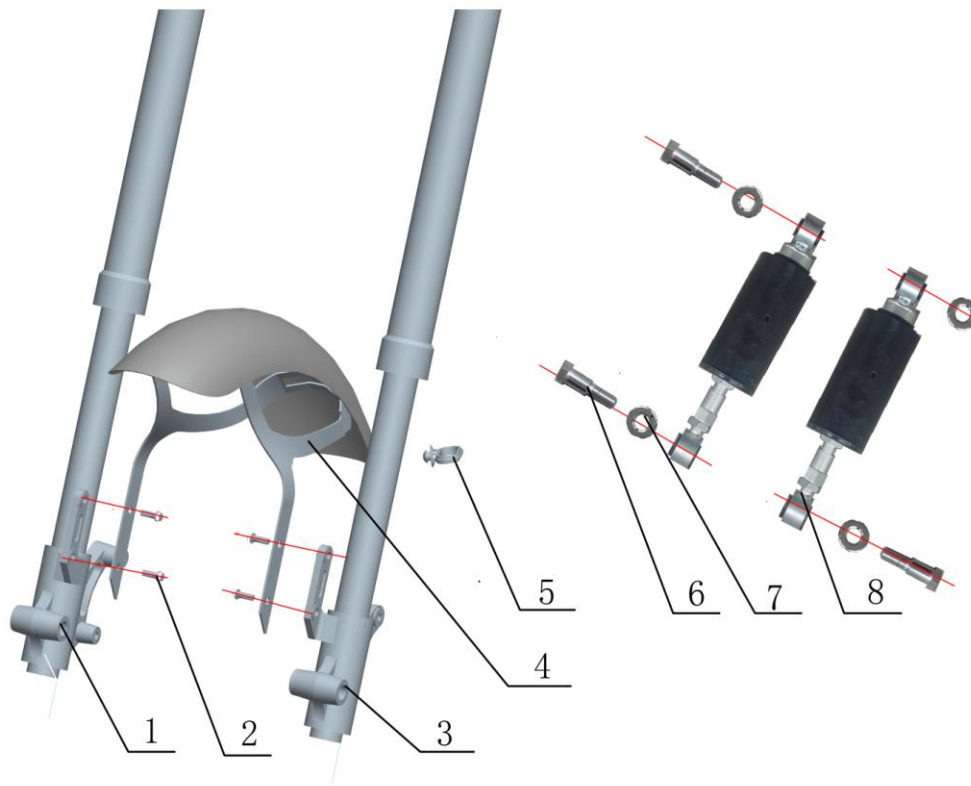
F-3 BATTERIA E PORTA ATTREZZI



s/n	part number	part code	parts english name	qty
1	1.57.15.0000100	DD250E-6-1500-001	tool box body	1
2	1.57.15.000020C	DD250E-6-1500-002	tool box cover (matte black)	1
3	1.57.15.000030S	DD250E-6-1500-003	tool box lock	1
4	1.57.02.0300000	DD250E-6-0203-000	Battery holder	1
5	1.01.04.0000200	DD250E-0400-002	Strap.Battery	1
6	1.01.04.0300010	DD250E-0403-000	护Battery free maintainance	1
7	1.01.04.1700000	DD250E-0417-000	Battery cathode anode	1
8	1.01.04.0400100	DD250E-0404-001	Battery cover	1

6	1.99.06.0602000	GB820-85	bolt M6×20(steelness)	2
7	1.01.06.0000200	DD250E-0600-002	bar balance	2
8	1.B3.06.0830000	SPT35-0608-300	Return cable(DEL EFI)	1
9	1.01.06.0700200	DD250E-0607-002	clutch control cable	1
10	1.03.06.0500000	DD250E-5-0605-000	clutch control assy	1
11	1.01.06.0500800	DD250E-0605-008	Clutch lever L	1
12	1.01.06.0500700	DD250E-0605-007	left Shake lever braket	1
13	1.01.06.0500300	DD250E-0605-003	touch head	1
14	1.01.06.1300000	DD250E-0613-000	left mirror	1
15	1.01.06.1400000	DD250E-0614-000	right mirror	1
16	1.01.06.0500400	DD250E-0605-004	cover	1
17	1.01.06.0500500	DD250E-0605-005	bolt M6×25(chrome)	2

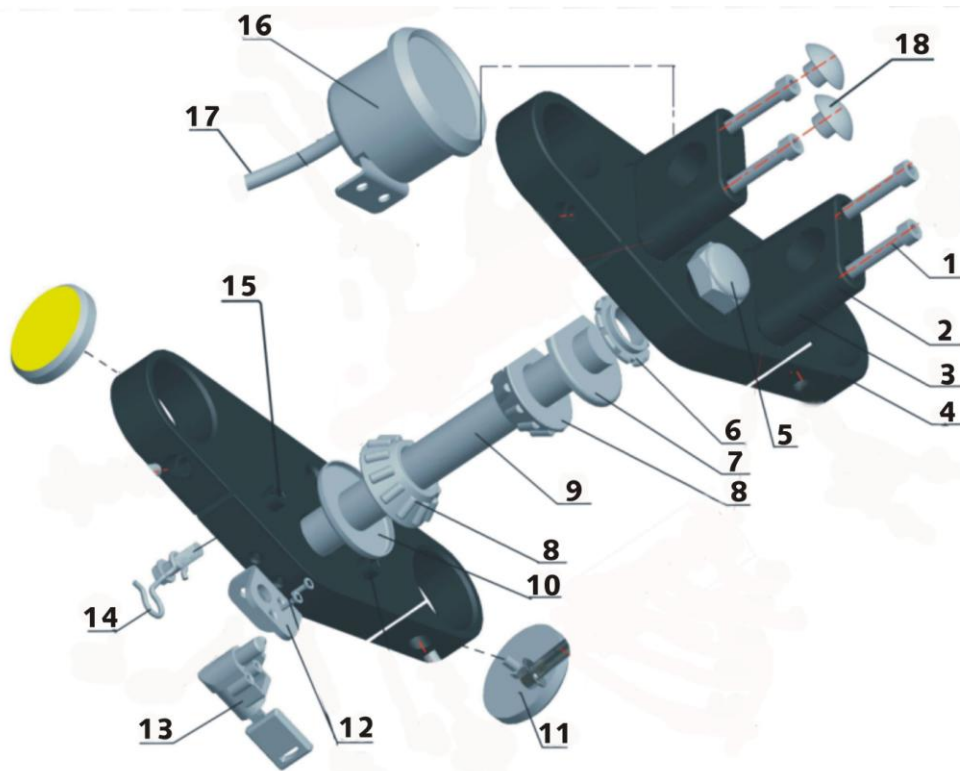
F-5 SOSPENSIONI



s/n	part number	part code	parts english name	qty
1	1.53.07.040000C	DD300E-6c-0704-000	Right front suspension black	1
	1.53.07.040000G	DD300E-6c-0704-000	left front suspension silver	1

2	1.99.26.060160H	GB5787-86	Bolt M6*16	4
3	1.53.07.030000C	DD300E-6c-0703-000	Right front suspension black	1
	1.53.07.030000G	DD300E-6c-0703-000	left front suspension silver	1
4	1.53.27.000000E	DD300E-6C-2700-002	front fender (black/grey)	1
	1.53.27.000000B	DD300E-6C-2700-002	front fender (white/grey)	1
5	1.11.27.0000300	DD90E-2700-003	Cable loop	1
6	1.57.20.0000200	DD250E-6-2000-002	rear shock bolt	4
7	1.57.20.000030R	DD250E-6-2000-003	rear shock washer	4
8	1.57.20.0000010	DD250E-6-2000-000	rear shock(star)	2

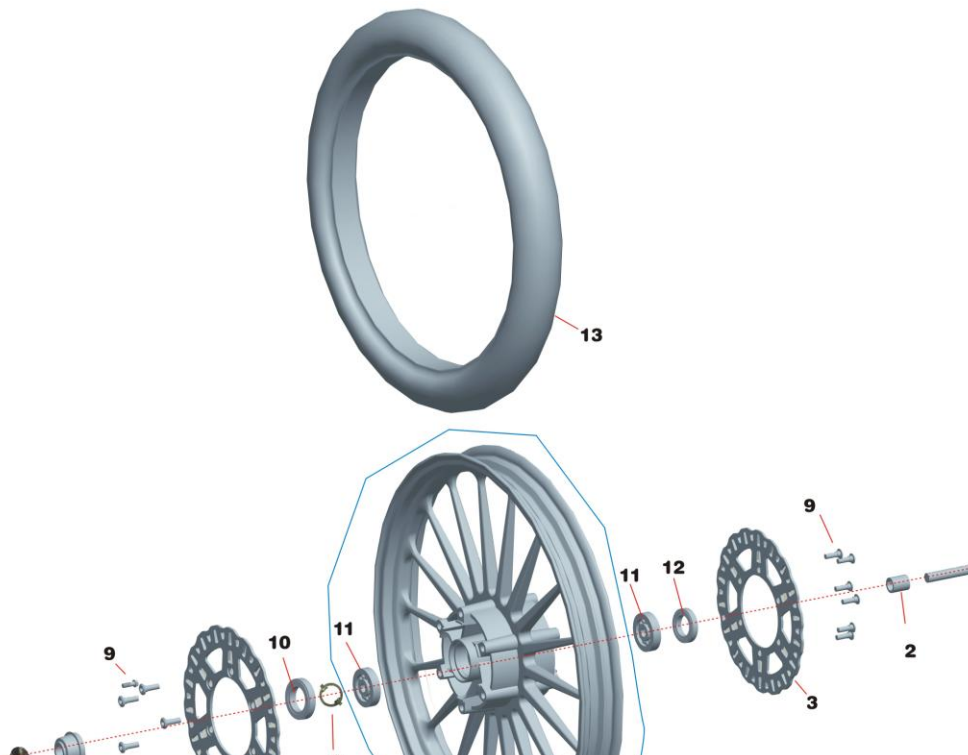
F-6 STERZO E CONTACHILOMETRI

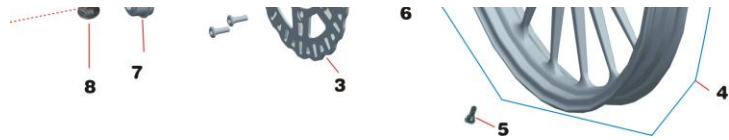


s/n	part number	part code	parts english name	qty
-----	-------------	-----------	--------------------	-----

1	1.53.06.0000500	DD300E-6C-0600-005	M8×80	4
2	1.53.06.000060C	DD300E-6C-0600-006	riser cap (matte black)	2
3	1.53.06.000070C	DD300E-6C-0600-007	riser (matte black)	2
4	1.53.06.010010C	DD300E-6C-0601-001	uppder crown(matte black)	1
5	1.57.07.0000100	DD250E-6-0700-001	Bearings nut M25x1x9.5	1
6	1.57.06.0000400	DD250E-6-0600-004	M25×1×S1te7m nut M25*1*17	1
7	1.57.07.0000200	DD250E-6-0700-002	Top cover	1
8	1.99.72.3020500	GB279-88	Bearing30205	2
9	1.57.07.0100200	DD250E-6-0701-002	Steering axle	1
10	1.57.07.0000400	DD250E-6-0700-004	Lower cover	1
11	1.01.07.0500000	DD250E-0705-000	Side reflector assy	2
12	1.53.15.0200100	DD300E-6C-1502-001	Stem lock mount	1
13	1.63.15.0200000	DD300E-6-1502-000	Stem lock	1
14	1.53.27.0120100	DD300E-6C-2701-201	Hook	1
15	1.53.07.010010C	DD300E-6C-0701-001	bottom tree (matte black)	1
16	1.53.05.0100030	DD300E-6C-0501-300	odometer set (DEL EFI)	1
17	1.68.05.0200000	DD300G-0502-000	odometer cable	1
18	1.66.06.0000900	DD250E-0600-009	Cap button	8

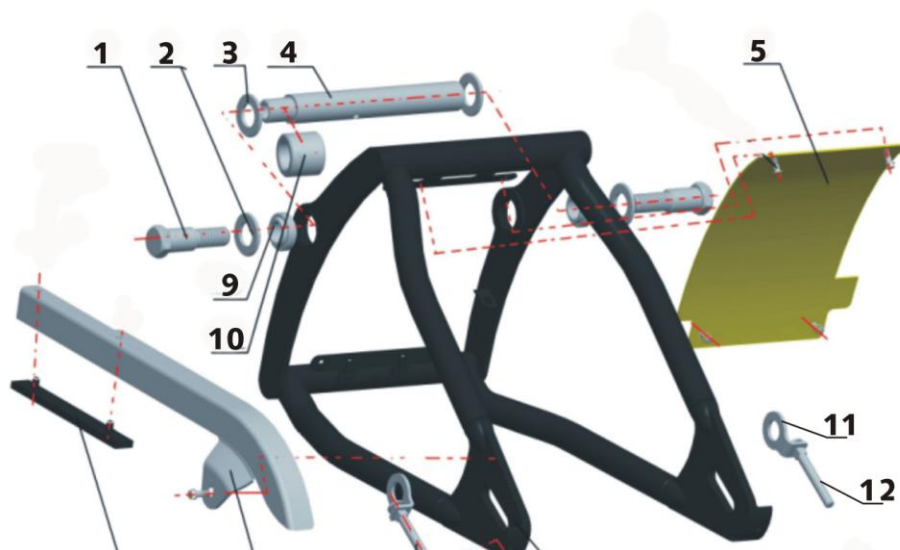
F-7 RUOTA ANTERIORE





s/n	part number	part code	parts english name	qty
1	1.53.08.0000200	DD300E-6C-0800-002	Front wheel axle	1
2	1.53.08.0000400	DD300E-6C-0800-004	Outer spacer (Φ17×Φ30×30)	1
3	1.68.08.0000210	DD300G-0800-002	Front discΦ300(II)YLP753A-3BB	2
4	1.53.08.010010C	DD300E-6C-0801-001	front rim (MT2.15×21、 black)	1
5	1.01.10.0000500	DD250E-1000-005	Valve nut	1
6	1.01.08.0400100	DD250E-0804-001	Steering clip	1
7	1.53.08.0400000	DD300E-6C-0804-000	Counter assy	1
8	1.56.08.0000200	DD250E-9B-0800-002	Front wheel axle nut	1
9	1.01.08.000030R	DD250E-0800-003	Hex inner bolt M8*24	12
10	1.53.08.0000300	DD300E-6C-0800-005	seal 40×55×5	1
11	1.99.72.6303100	GB278-86	bearing30*47*5	2
12	1.53.10.0000400	DD300E-6C-1000-004	Outer oil seal	1
13	1.53.08.0001200	DD300E-6C-0800-012	front tire (90/90-21) CCC	1

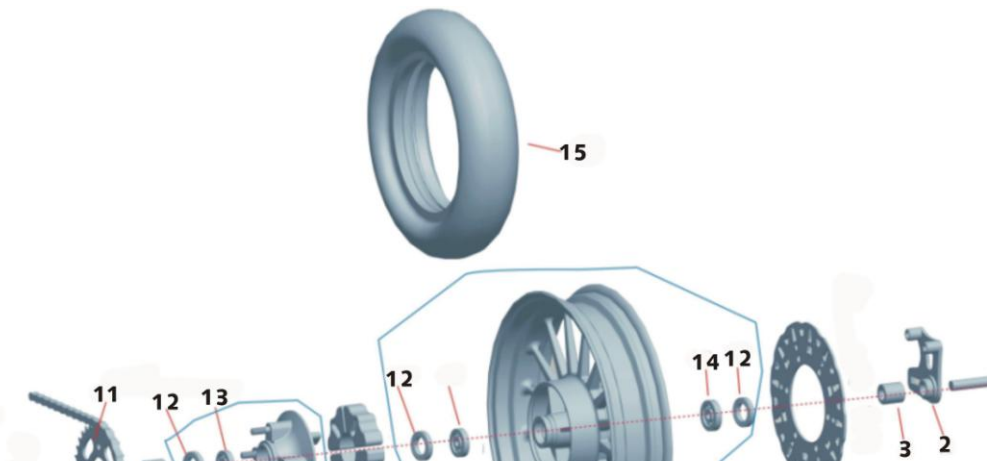
F-8 FORCELLONE POSTERIORE

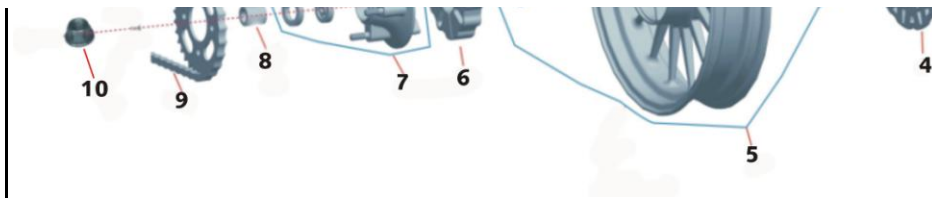




s/n	part number	part code	parts english name	qty
1	1.57.09.0000200	DD250E-6-0900-002	bolt, arm pivot shaft	2
2	1.57.09.0000300	DD250E-6-0900-003	chain protect washer($\Phi 20 \times \Phi 38 \times 3$)	2
3	1.57.09.0000500	DD250E-6-0900-005	spacer($\Phi 20 \times \Phi 40 \times 6$)	2
4	1.57.09.0010000	DD250E-6-0900-100	shake shaft	1
5	1.57.09.0200100	DD250E-6-0902-001	rear mudguard	1
6	1.57.09.0100000	DD250E-6-0901-000	rear shaker	1
7	1.57.09.0300000	DD250E-6-0903-000	chain cover	1
8	1.57.09.0000300	DD250E-6-0900-003	chain protect washer($\Phi 20 \times \Phi 38 \times 3$)	1
9	1.57.09.0000400	DD250E-6-0900-004	bearingGE20ES	2
10	1.57.09.0010100	DD250E-6-0900-101	chain protect sleeve	1
11	1.63.10.0400100	DD300E-6-1004-001	adjust bolt	2
12	1.63.10.0400200	DD300E-6-1004-002	adjustment	2

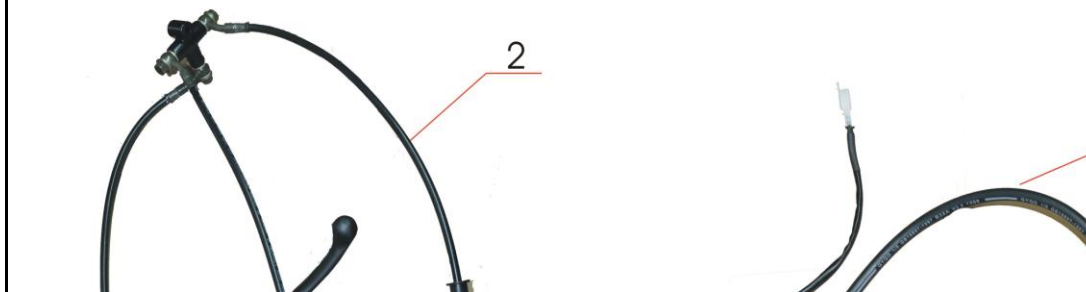
F-9 RUOTA POSTERIORE





s/n	part number	part code	parts english name	qty
1	1.53.10.0400000	DD300E-6C-1004-000	Rear wheel axle($\Phi 17 \times 291$)	1
2	1.53.10.0300100	DD300E-6C-1003-001	Mount plate.Rear brake pump	1
3	1.30.10.0001100	DD350E-2-1000-011	Alex sleeve L($\Phi 17 \times \Phi 30 \times 27$)	1
4	1.68.10.0001710	DD300G-1000-017	disk $\Phi 240$ (II)YLP752A-3BB	1
5	1.53.10.010000C	DD300E-6C-1001-000	rear rim (MT3.75 \times 16、black)	1
6	1.53.10.0000300	DD300E-6C-1000-003	Buffer	4
7	1.53.10.0000600	DD300E-6C-1000-006	Buffer assy	1
8	1.30.10.0001400	DD350E-2-1000-014	Alex sleeve R($\Phi 17 \times \Phi 30 \times 37$)	1
9	1.99.79.3001000	GB/T14212-93	chain530H-1 \times 124L(chaohui)	1
10	1.99.44.1400000	GB6187-86	lock nutM14 \times 1.5	1
11	1.53.10.0700000	DD300E-6C-1006-000	Chain sprocket 32T big hole	1
12	1.53.10.0000400	DD300E-6C-1000-004	Outer oil seal	3
13	1.99.72.0600500	GB276-94	bearing 6005RZ	1
14	1.99.72.6303100	GB278-86	bearing30*47*5	2
15	1.57.10.0001600	DD250E-6-1000-016	rear tire160/80-16 (CCC)	1

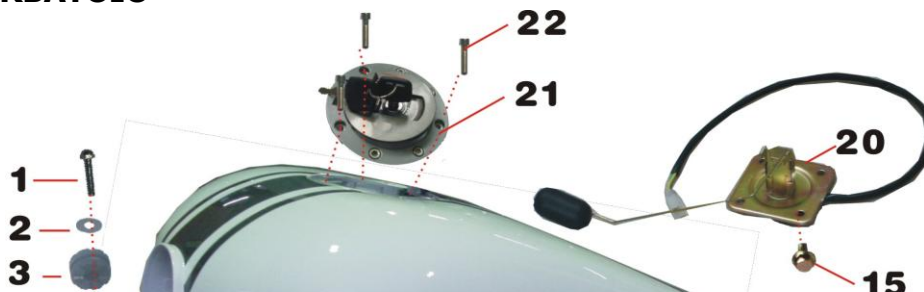
F-10 FRENI

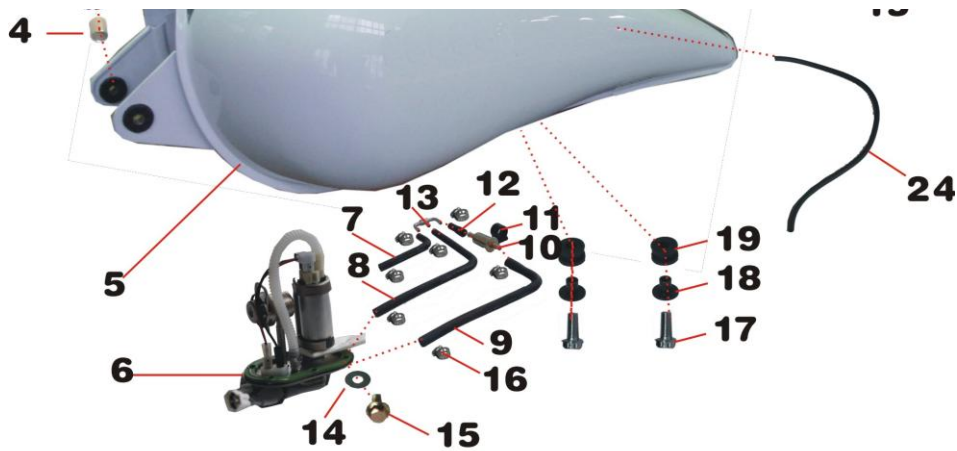




s/n	part number	part code	parts english name	qty
1	1.65.10.0300000	DD125E-5-1003-000	rear brake pump assy(with oil mirror)	1
2	1.53.08.0200000	DD300E-6C-0802-000	front brake pump assy	1

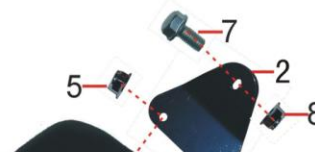
F-11 SERBATOIO





s/n	part number	part code	parts english name	qty
1	1.01.11.0000600	DD250E-1100-006	Bolt M6*25	4
2	1.11.11.0000200	DD90E-1100-002	Tank washer(Φ6.5×Φ25×1.5)steelness	4
3	1.11.11.0000300	DD90E-1100-003	space(Φ7×Φ9×11)	4
4	1.11.11.0000100	DD90E-1100-001	rubber washer	4
5	1.53.11.020020B	DD300E-6C-1101-000	fuel tank (white/grey+LM) EFI	1
	1.53.11.020020D	DD300E-6C-1101-000	fuel tank (black/grey+LM) EFI	1
6	1.56.32.0900000	DD250E-9B-3209-000	oil pump assy (DEL)	1
7	1.A7.32.0900400	DD350E-6-3209-004	oil cableIII(DEL、EFI)	1
8	1.A7.32.0900600	DD350E-6-3209-006	oil V (DEL、EFI)	1
9	1.A7.32.0900200	DD350E-6-3209-002	oil I (DEL、EFI)	1
10	1.56.32.0100000	DD250E-9B-3210-000	Air filter (DELPHI EFI)	1
11	1.56.32.0100100	DD250E-9B-3201-001	oil air filter mount cover	1
12	1.56.32.0900300	DD250E-9B-3209-003	oil cable (II)	1
13	1.56.32.0900700	DD250E-9B-3209-007	tee I (DEL EFI)	1
14	1.56.32.0900100	DD250E-9B-3209-001	Aluminum padΦ6	6
15	1.99.27.060120S	GB5789-86(0202-003)	BltM6×12	10
16	1.56.32.0900800	DD250E-9B-3209-008	clampsΦ13	12
17	1.01.11.0000600	DD250E-1100-006	boltM6×25	2
18	2.24.0117.00600	DD250E-9A-0117006	Steel water tank shock absorber set	2
19	2.24.0117.00700	DD250E-9A-0117007	Tank shock absorber	2
20	1.57.05.0200000	DD250E-6-0502-000	Sensor Components	1
21	1.53.15.0000000	DD300E-6C-1500-000	Lock and lock the front fuel tank assembly	1
22	1.99.03.0502200	GB70-85	screwM5×22(steelness)	3
24	1.61.11.0000300	DD300E-9C-1100-003	Fuel tank leaking pipeΦ7×Φ11	1

F-12 SEDILE





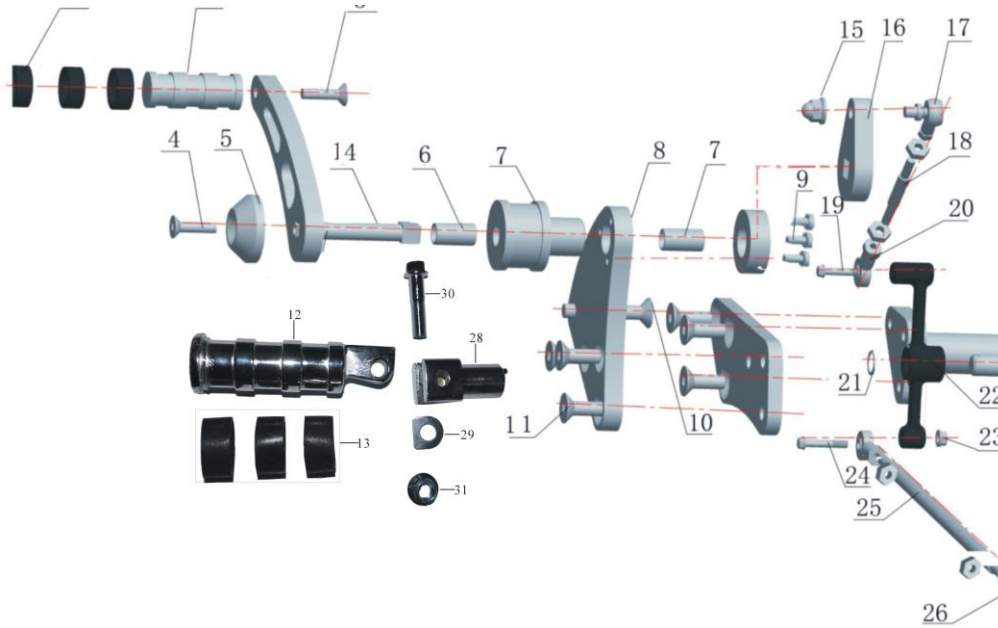
s/n	part number	part code	parts english name	qty
1	1.63.13.0100000	DD300E-6-1301-000	dual seat	1
2	1.57.13.0000800	DD250E-6-1300-008	dual seat rear mounting bracket black	1
3	1.57.13.0100100	DD250E-6-1301-001	Hinge, L.seat black	1
4	1.57.13.0100200	DD250E-6-1301-002	Hinge, R.seat balck	1
5	1.99.43.060000H	GB6177-86	Nut M6	6
6	1.99.27.100150S	GB5789-86	Nut M10×1.5×15	2
7	1.99.27.060120S	GB5789-86(0202-003)	Nut M6×12	1
8	1.99.44.060000S	GB6187-86	Nut M6	1

F-13 COMANDO MARCE

1

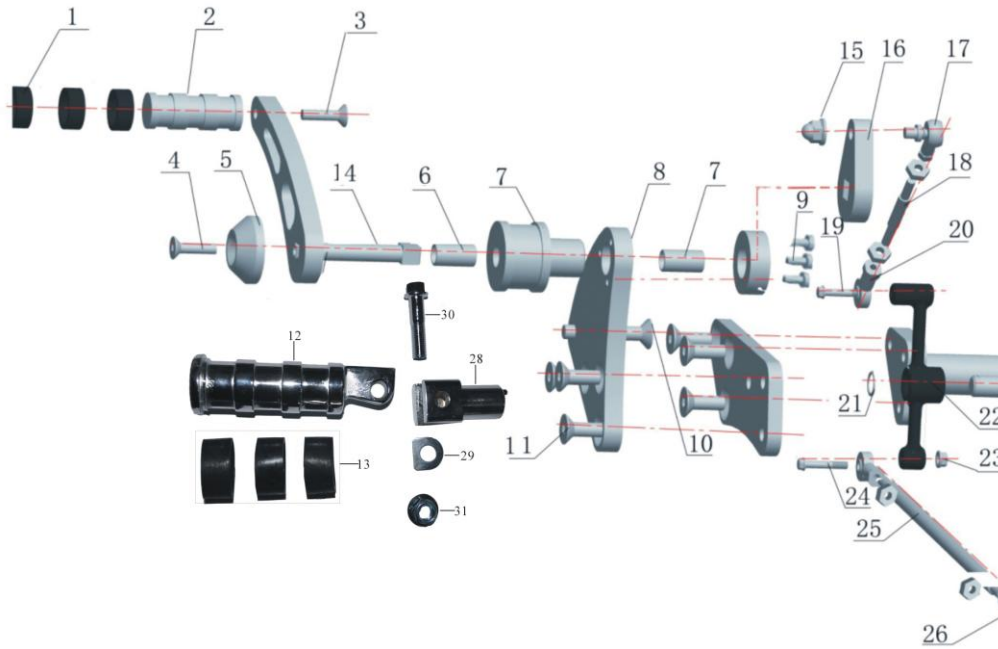
2

3



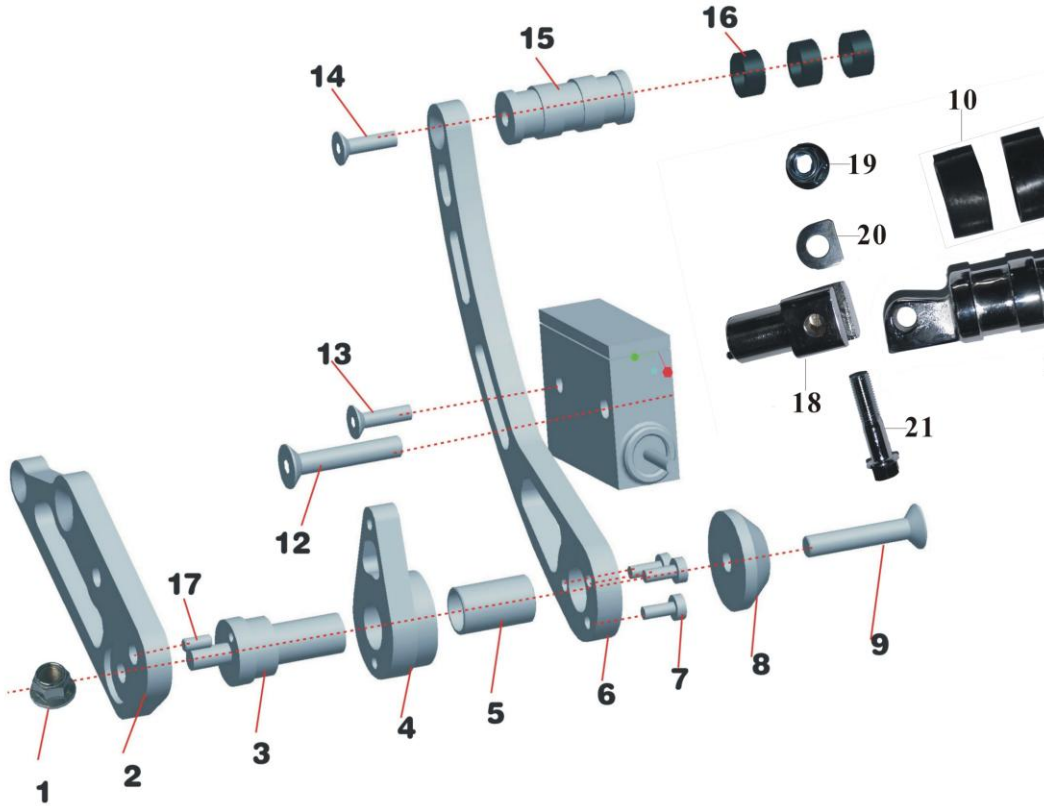
s/n	part number	part code	parts english name	qty
1	1.57.14.0240400	DD250E-6-1402-404	Rubber sleeve with damper	3
2	1.63.14.0240100	DD300E-6-1402-401	Peg pole (CP)	1
3	1.99.02.0802500	GB70.3-2000	screwM8×25	1
4	1.99.02.0601600	GB70.3-2000	screwM6×16	1
5	1.57.14.0600100	DD250E-6-1406-001	Connector L	1
6	1.57.14.0610200	DD250E-6-1406-102	Alex sleeve smallΦ12×Φ15.4×28	2
7	1.57.14.0610100	DD250E-6-1406-101	Mounting bracket. L (CP)	1
8	1.57.14.060040S	DD250E-6-1406-004	Mounting plate. L	1
9	1.99.03.060160S	GB70-85	screwM6×16	3
10	1.99.02.1004500	GB70.3-2000	screwM10×1.5×45	1
11	1.99.02.1002500	GB70.3-2000	screwM10×1.5×25	6
12	1.57.14.0250210	DD250E-6-1402-502	Main peg pole folding	1
13	1.57.14.0230300	DD250E-6-1402-303	Rubber sleeve(II)	3
14	1.57.14.0600200	DD250E-6-1406-002	Shift pole (I)	1
15	1.01.03.0101300	DD250E-0301-013	nutM8(low cover)steelness	1
16	1.57.14.0200600	DD250E-6-1402-006	shift pole	1
17	1.63.14.0600800	DD300E-6-1406-008	Front joint	1
18	1.53.14.0600100	DD300E-6C-1406-001	shift pole	1
19	1.01.06.0500500	DD250E-0605-005	bolt M6×25	1
20	1.57.10.0102000	DD250E-6-1001-020	chain	2
21	1.99.63.1500000	GB894.1-86	flexible ring15	1
22	1.53.14.0600600	DD300E-6C-1406-006	shift pole	1
23	1.99.44.060000S	GB6187-86	nutM6	1
24	1.99.26.0603500	GB5787-86 (0202-003)	boltM6×35	1

F-13 COMANDO MARCE



s/n	part number	part code	parts english name	qty
25	1.02.14.0600600	DD250E-9-1406-006	double bolt245mm	1
26	1.17.14.0800000	DD150E-2-1408-000	Shake lever assy	1
27	1.99.24.0602000	GB5783-86	boltM6×20	1
28	1.57.14.0250100	DD250E-6-1402-501	Main peg braket	1
29	1.57.14.0250400	DD250E-6-1402-504	Elastic Gasket	1
30	1.01.21.0001100	DD250E-2100-011	boltM10×40	1
31	1.99.44.100000S	GB6187-86	self lockM10×1.25	1

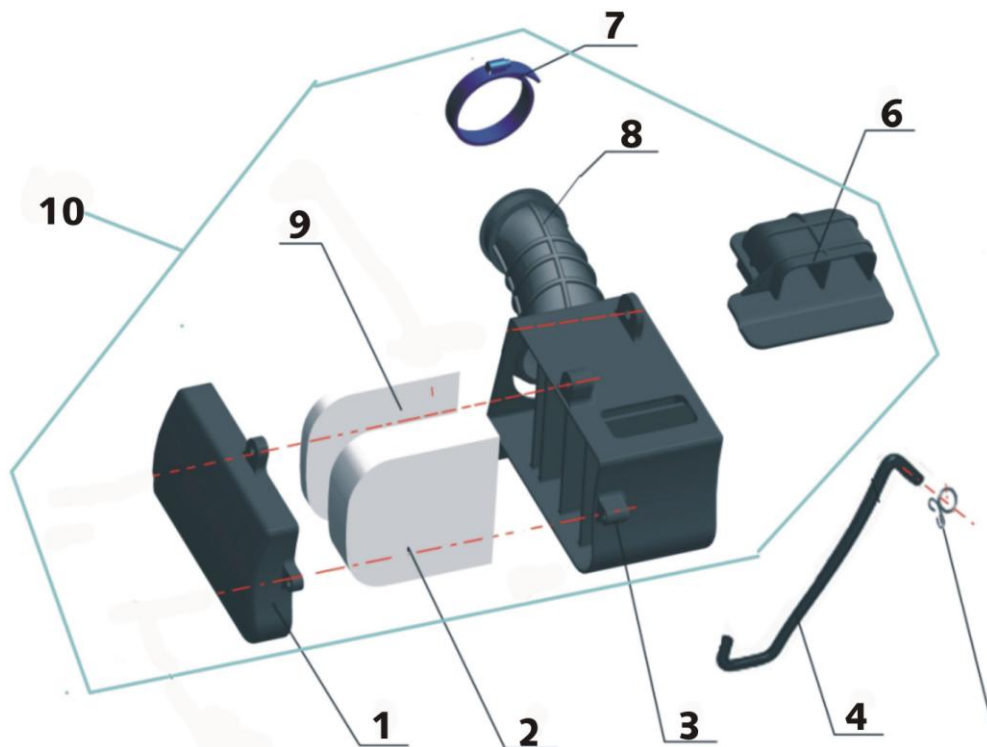
F-14 COMANDO FRENO POSTERIORE



s/n	part number	part code	parts english name	qty
1	1.99.44.100000R	GB6187-86	Self-locking nut M10*1.25	1
2	1.57.14.020010S	DD250E-6-1402-001	Mounting bracket. R (CP)	1
3	1.57.14.0200000	DD250E-6-1402-000	Control spacer	1
4	1.57.14.0220000	DD250E-6-1402-200	Pole bracket. Rear brake	1
5	1.57.14.0220200	DD250E-6-1402-202	Spacer (big)(Φ19×Φ22×38)	1
6	1.57.14.0200200	DD250E-6-1402-002	Rear brake pole	1
7	1.99.03.060160S	GB70-85	screwM6×16	3
8	1.57.14.0200300	DD250E-6-1402-003	Connector block. R	1
9	1.99.02.1003500	GB70.3-2000	screwM10×1.5×35	1
10	1.57.14.0240400	DD250E-6-1402-404	Rubber sleeve with damper	3
11	1.63.14.0230100	DD300E-6-1402-301	Main peg pole	1
12	1.99.02.1008000	GB70.3-2000	screwM10×1.5×80	1
13	1.99.02.0803500	GB70.3-2000	screwM8×35	1
14	1.99.02.0802500	GB70.3-2000	screwM8×25	1
15	1.63.14.0240100	DD300E-6-1402-401	peg pole(CP)	1
16	1.57.14.0240300	DD250E-6-1402-403	Rubber sleeve (four)	3
17	1.57.14.0220300	DD250E-6-1402-203	Pin(Φ6×18)	1
18	1.57.14.0250100	DD250E-6-1402-501	main peg mounting braket	1

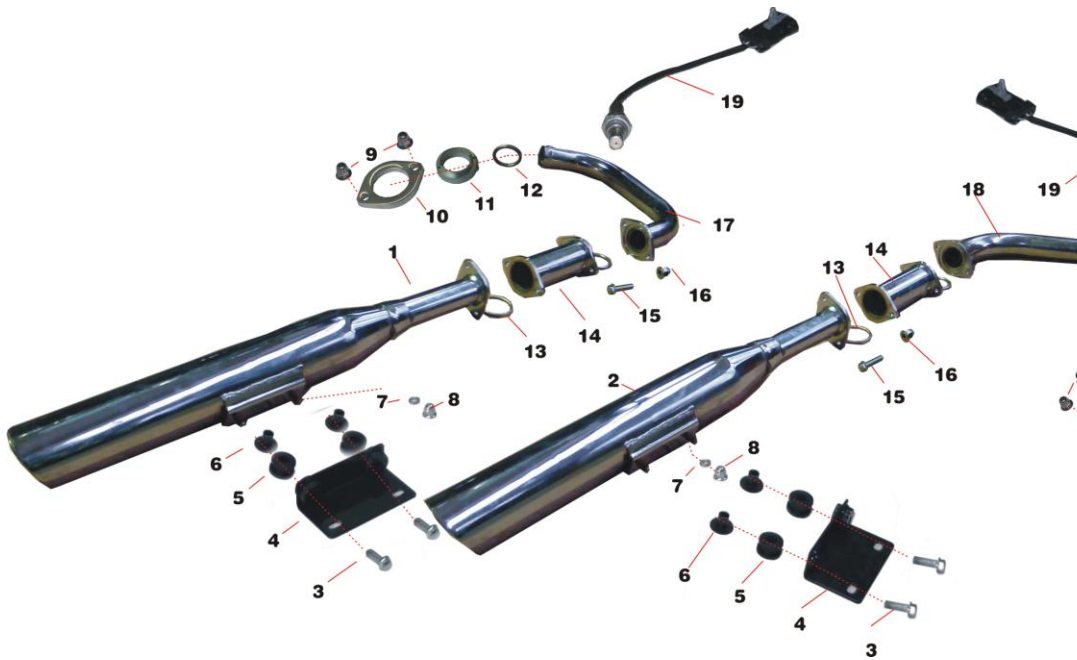
19	1.01.21.0001100	DD250E-2100-011	boltM10×40	1
20	1.99.44.100000S	GB6187-86	selt lockM10×1.25	1

F-15 FILTRO ARIA



s/n	part number	part code	parts english name	qty
1	1.63.17.0001300	DD300E-6-1700-013	Air filter upper shell	1
2	1.63.17.0001100	DD300E-6-1700-011	Air filter core	1
3	1.63.17.0001400	DD300E-6-1700-014	Air filter bottom shell	1
4	1.63.17.0000500	DD300E-6-1700-005	circuit pipe	1
5	1.01.11.0000200	DD250E-1100-002	Lock ring 8	1
6	1.A7.17.0000200	DD350E-6-1700-002	Air filter outlet pipe (DEL EFI)	1
7	1.01.17.0000100	DD250E-1700-001	Hoop	1
8	1.01.17.0000200	DD250E-1700-002	Air filter outlet pipe	1
9	1.63.17.0001200	DD300E-6-1700-012	Screen, filter	1
10	1.A7.17.0000000	DD350E-6-1700-000	FiLter set(DEL、EFI)	1

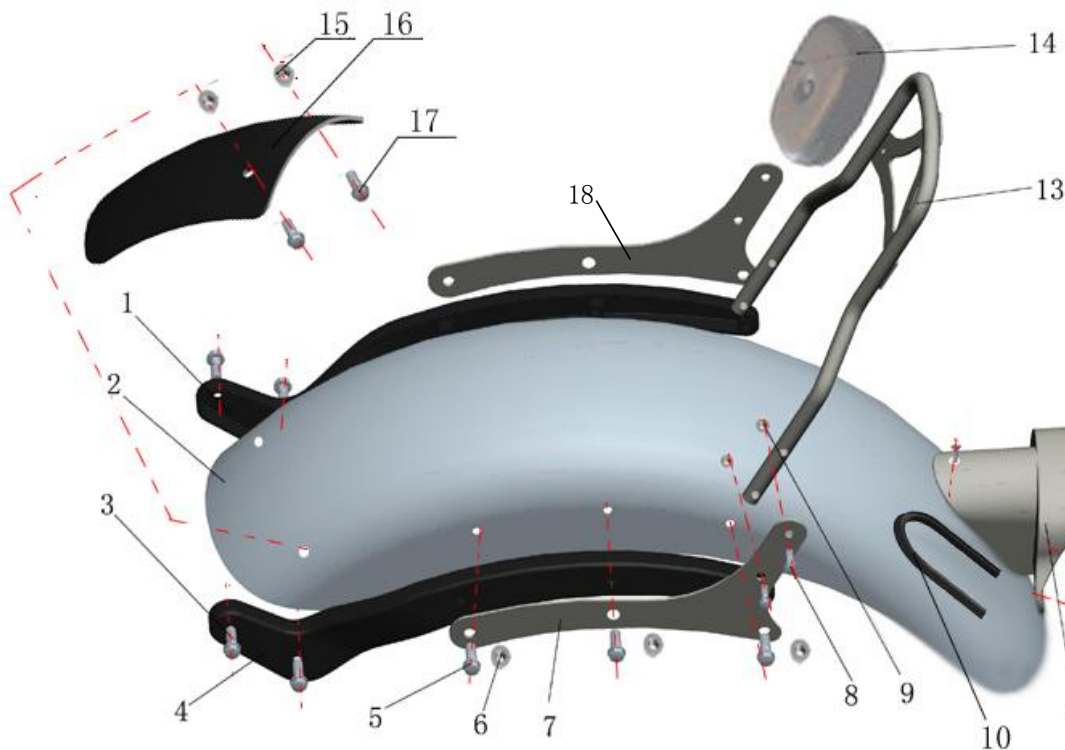
F-16 MARMITTE



s/n	part number	part code	parts english name	qty
1	1.63.18.0100200	DD300E-6-1801-002	left rear exhaust	1
2	1.63.18.0200200	DD300E-6-1802-002	right rear exhaust pipe	1
3	1.99.24.0802500	GB5783-86	boltM8×25steelness	4
4	1.57.18.0300000	DD250E-6-1803-000	mounting plate R	2
5	1.01.18.0000600	DD250E-1800-006	Mat block	4
6	1.01.18.0000500	DD250E-1800-005	Sleeve	4
7	1.99.56.080000S	GB93-87	stanard foldind washer8 steelness	4
8	1.01.03.0101300	DD250E-0301-013	cap nutM8(low cover)steelness	4
9	1.01.18.0000300	DD250E-1800-003	Cap nut M8.Exhaust	4
10	1.01.18.0000100	DD250E-1800-001	Exhaust flange	2
11	1.01.18.0300000	DD250E-1803-000	tube ends	2
12	1.01.18.0000210	DD250E-1800-002	Seal washer. Exhaust	2

13	1.10.18.0300200	DD125E-1800-002	Seal washer. Exhaust(Φ43×Φ52)	4
14	1.10.18.0310000	DD125E-1803-100	exhaust pipe joint	2
15	1.99.26.0602200	GB5787-86	bolt M6×22	8
16	1.01.03.0100400	DD250E-0301-004	cap nutM6	8
17	1.63.18.0100100	DD300E-6-1801-001	exhaust pipe	1
18	1.63.18.0200100	DD300E-6-1802-001	exhaust pipe	1
19	1.A7.32.0600000	DD350E-6-3206-000	oxgen sensor(DEL)	2

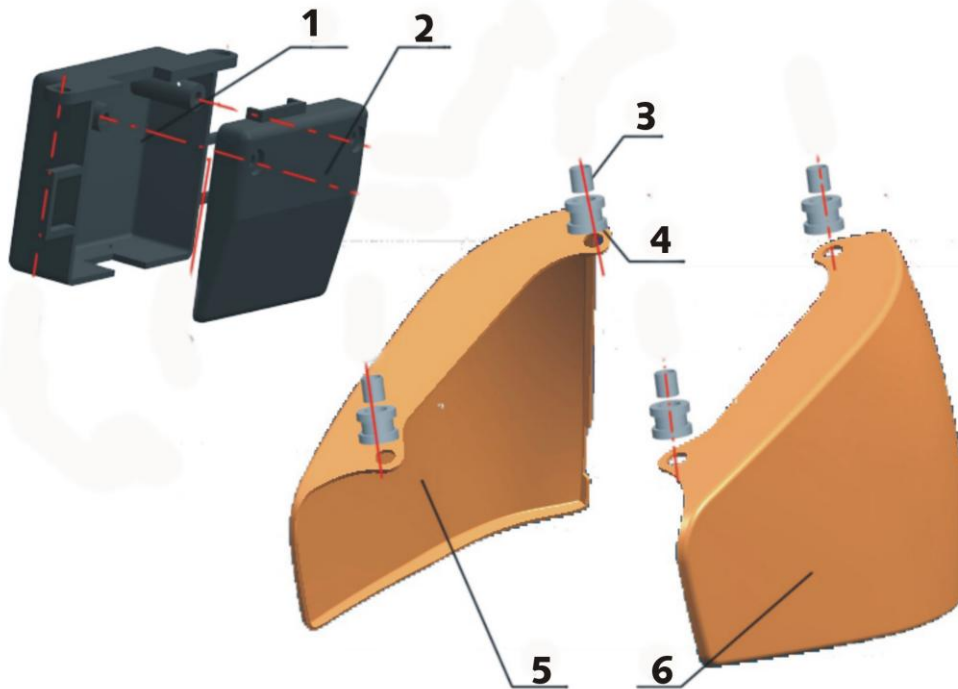
F-17 PARAFANGO POSTERIORE



s/n	part number	part code	parts english name	qty
1	1.53.21.000080C	DD300E-6C-2100-008	rear fender support bracket matte balck	1
2	1.53.21.000001C	DD300E-6C-2100-000	Rear fender (black/grey)	1
	1.53.21.000000B	DD300E-6C-2100-000	Rear fender (white/grey)	1
3	1.99.27.100250S	GB5789-86	boltM10×1.5×25	4
4	1.53.21.000080C	DD300E-6C-2100-008	rear fender support bracket L matte balck	1
5	1.99.27.0801600	GB5789-86(0200-007)	bolt M8×16	6
6	1.99.43.0800000	GB6177-86	nut M8	6
7	1.53.13.0000100	DD300E-6C-1300-001	sissy side bracket L	1
8	1.99.27.0801600	GB5789-86(0200-007)	boltM8×16	4

9	1.01.03.0101300	DD250E-0301-013	cap nutM8(low cover)steelness	4
10	1.56.11.0400200	DD250E-9B-1104-002	rubber	1
11	1.53.21.0002200	DD300E-6C-2100-022	Tail light mount bracket	1
12	1.99.03.0502000	GB70-85	screwM5×20steelness	3
13	1.65.13.0500000	DD125E-5-1305-000	Backrest bracket seprate	1
14	1.63.13.0400000	DD300E-6-1304-000	Backrest pad	1
15	1.99.44.060000R	GB6187-86	nut M6	2
16	1.57.09.0200100	DD250E-6-0902-001	back fender	1
17	1.99.27.060120H	GB5789-86(0202-003)	bolt M6×12	2
18	1.53.13.0000200	DD300E-6C-1300-002	sissy side bracket R	1

F-18 FIANCHETTI LATERALI



s/n	part number	part code	parts english name	qty
1	1.11.06.0000500	DD90E-0600-005	wire box	1
2	1.11.06.0000400	DD90E-0600-004	wire box cover	1
3	1.01.02.0200400	DD250E-0202-004	Rubber ring(I)	4
4	1.57.16.0100200	DD250E-6-1602-002	sleeveΦ6.5×Φ9×7.5	4

5	1.57.16.010001C	DD250E-6-1601-000	left side cover matte black	1
6	1.57.16.020001C	DD250E-6-1602-000	right side cover matte black	1

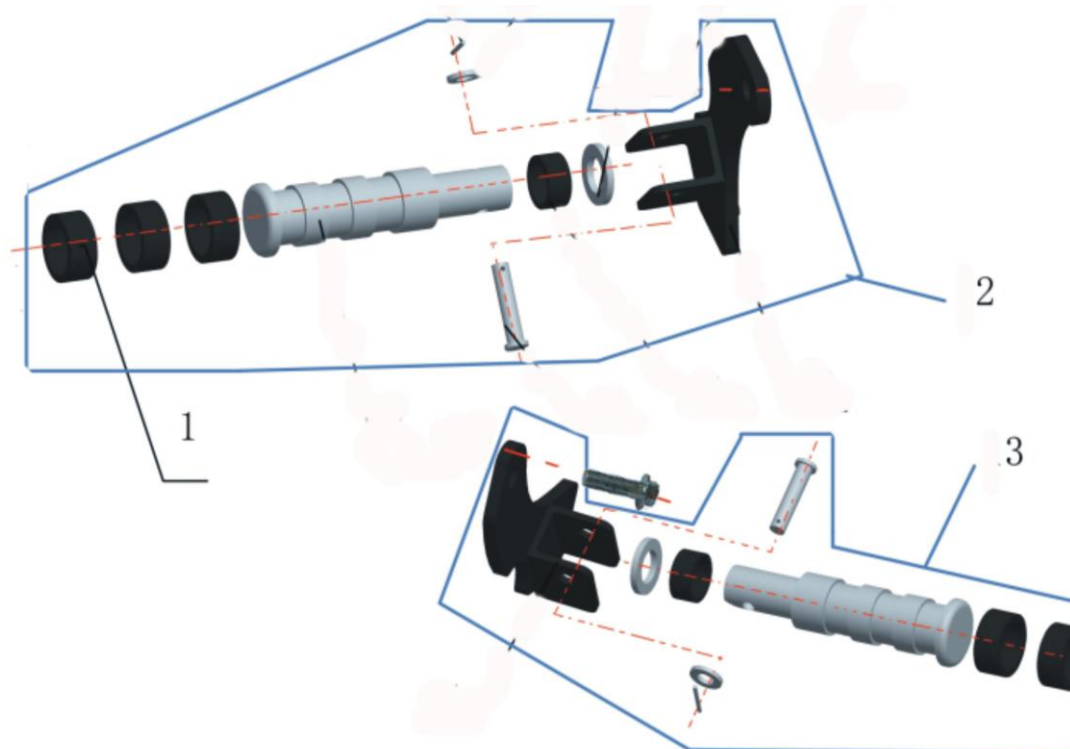
F-19 Serbatoio liquido raffreddamento



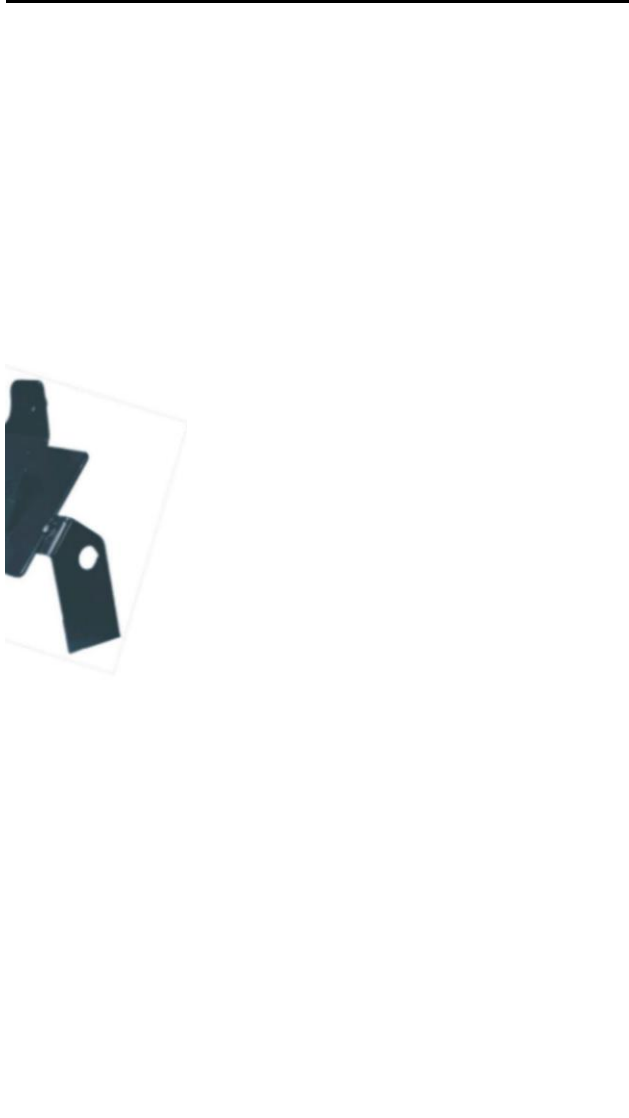
s/n	part number	part code	parts english name	qty
1	1.23.00.0000300	DD250E-9A-000-003	Radiator cap	1
2	1.99.04.0601200	GB818-85	screw M6×12	1
3	1.23.00.0000100	DD250E-9A-0000-001	Radiator down	1

4	1.17.18.0400500	DD150E-2-1804-005	Hoop 17 army green	2
5	1.63.00.0000500	DD300E-6-0000-005	radiator filler hose(bent)	1
6	1.63.00.0000100	DD300E-6-0000-001	Water bottle	1
7	1.63.00.0000200	DD300E-6-0000-002	kettle cover	1
8	1.99.27.060120H	GB5789-86(0202-003)	bolt M6×12	1

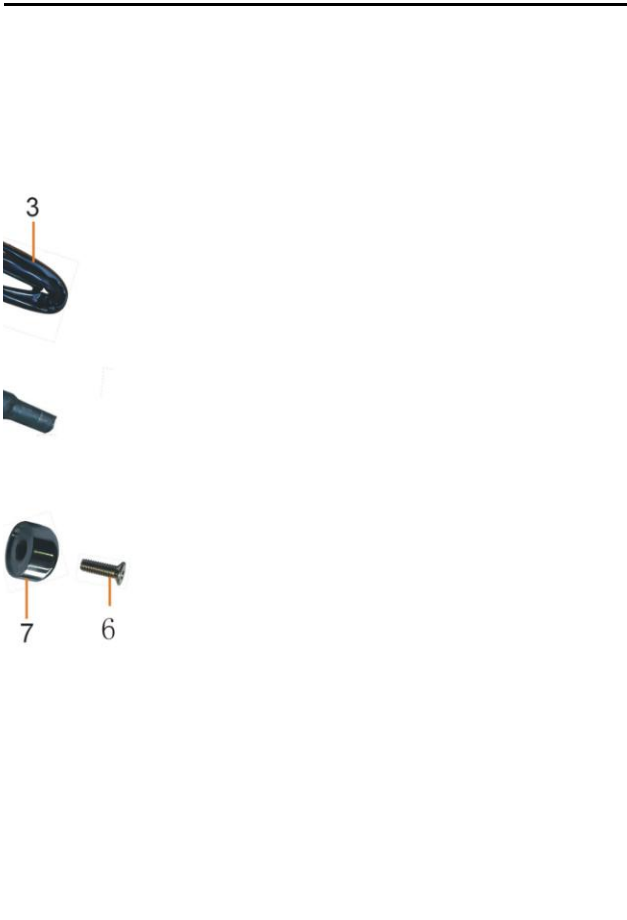
F-20 POGGIAPIEDI POSTERIORI



s/n	part number	part code	parts english name	qty
1	1.57.14.0230300	DD250E-6-1402-303	Rubber sleeve(II)	6
2	1.63.19.111030R	DD300E-6-1911-103	side foot pedal assy. L black	1
3	1.63.19.121030R	DD300E-6-1912-103	side foot pedal assy. R black	1



price	order	note



price	order	note



price	order	note

price	order	note



--	--	--

price	order	note



price	order	note